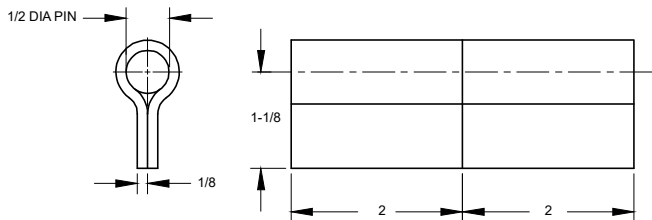


M-1 Butt Hinge

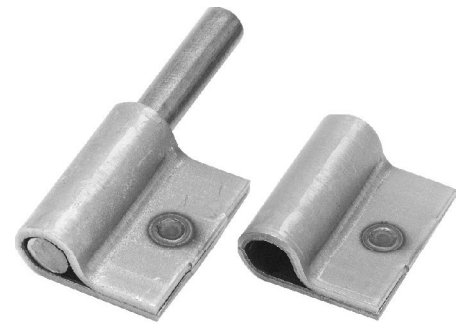
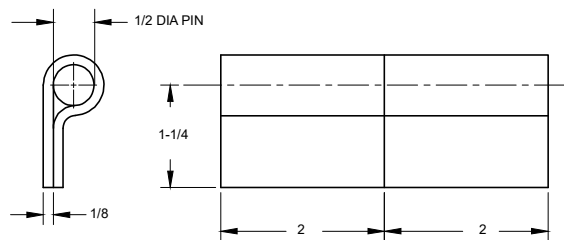
Steel construction/plain finish
 Removable 1/2" x 3-3/4" pin
 Available in stainless steel
 Available with 4" or 4-1/2" pin
 Available with 3/8" DIA pin
 Available with welded pin
 Available with holes



FM1375XXXXXX

M-1A Flush Mount Butt Hinge

Steel construction/plain finish
 Removable 1/2" x 3-3/4" pin
 Available in stainless steel
 Available with 4" or 4-1/2" pin
 Available with 3/8" DIA pin
 Available with welded pin (right or left hand)
 Available with holes



FM1A37XXXXXX